



Lifting your dreams

TRUCK LOADER CRANE

TM-ZT500

For Medium / Large Size Vehicles

**NEW
MODEL**

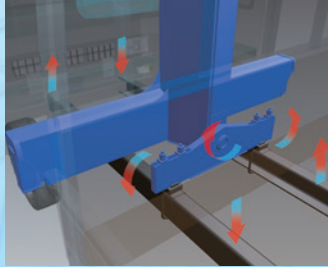
CARGO CRANE



TM-ZT500 Series

THREE-POINT SUPPORT SYSTEM (Equalizer Crane Support)

The equalizer crane support system protects the chassis frame by evenly distributing the load applied to the frame during vehicle traveling to prevent excessive stress from concentrating at any one point.



FULL CIRCLE, CONTINUOUS SLEWING

360-degree FULL CIRCLE, continuous rotation for more efficient operations.



BIGGER HYDRAULIC TANK

A bigger size hydraulic tank of 90 L capacity for minimizing hydraulic oil temperature rise.



STRONG OUTRIGGER AND SAFETY LOCK

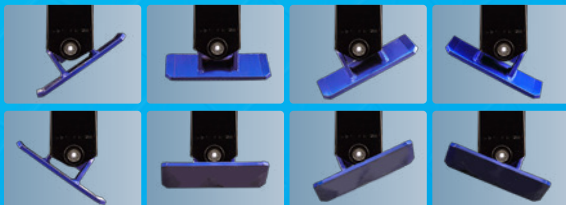
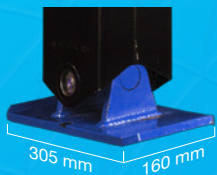
Strong and powerful outriggers with box structure jacks, an easy and safe double lock system and new universal float. The lock system is the same as advanced TADANO standard safety system.



LOCK SYSTEM

BIGGER UNIVERSAL OUTRIGGER FLOAT

The universal float moves 360 degrees to fit to any ground for better stability with less ground pressure due to larger sized floats.



ELECTROSTATIC PAINTING

Our high deposit and efficient electrostatic painting method, which maintains the external appearance fine and beautiful, prevents the machine from rusting, and provides uniform painting quality equally at every corner.



OPERATION LEVER

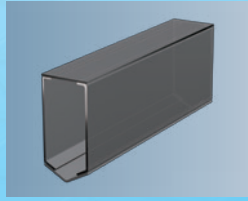
High performance and quick response operation levers are located at lower reachable positions for safe and efficient operation. No need to ride on the crane or stretch your arm. In addition, they are equipped with auto accelerator features. When the boom telescoping lever, winch lever, boom elevating lever, boom swing lever, or jack lever is operated, the BIGGER HYDRAULIC TANK accelerator is activated automatically.

Accelerator lever



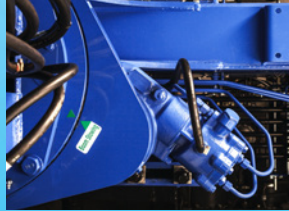
STRONG PENTAGONAL BOOM

TADANO's traditional strong pentagonal boom is thoroughly designed and well proven for its quality, strength and smoothness, with a rigid and fine-tuned telescoping boom providing comfortable crane operation.



AUTOMATIC SLEWING LOCK SYSTEM

The boom is locked securely to prevent accidental boom slewing out during driving.



HOOK IN (Hook In model only)

TADANO original HOOK IN system enhances work efficiency. No more manual belaying. Just push the HOOK IN button and operate the hoist up lever for automatic hook stow.



OVERWINDING-SAFETY FUNCTION

In the hook-in model, this function stops crane operations (hoisting up, boom elevation, and boom extension) when the hook block touches the weight, to prevent the hook block from hitting the boom head, and

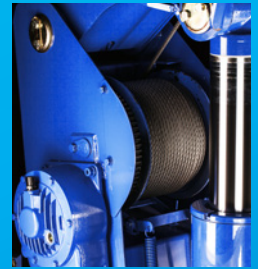
warns the operator with the buzzer.

In the standard model, this function gives alarms when the hook block touches the weight.



WINCH

An upgraded stronger winch motor provides a stable lifting operation.



CABLE FOLLOWER

(4- and 5-section boom models only)

The cable follower prevents disorderly cable (wire rope) winding by always pressing the cable onto the winch drum and puts the wire rope at a right position.



TM-ZT500 Series

TECHNICAL SPECIFICATIONS

MODEL	TM-ZT503	TM-ZT503H	TM-ZT504	TM-ZT504H	TM-ZT505	TM-ZT505H
CRANE CAPACITY	5,050 kg at 2.5 m (5-parts of line)					
BOOM	Fully hydraulic telescoping boom of pentagonal box construction			Fully powered partly synchronized telescoping boom of pentagonal box construction		
Number of sections	3			4		5
Length	3.47 m–8.31 m			3.55 m–10.8 m		3.77 m–13.34 m
Extending speed	4.84 m / 18 s			7.25 m / 21 s		9.57 m / 25 s
Elevating range/speed	1° to 78° / 12 s					
Max. lifting height**	Approx. 10.3 m**			Approx. 12.7 m**		Approx. 15.2 m**
Max. load radius**	8.09 m**			10.58 m**		13.12 m**
WINCH	Hydraulic motor driven. Spur gear speed reduction, provided with mechanical brake.			Hydraulic motor driven. Spur gear speed reduction, provided with mechanical brake and cable follower.		
Max. Single line pull	9.90 kN {1,010 kgf}					
Max. Single line speed	66 m/min. (at 4th layer)					
Wire rope (Diameter x length)	8 mm x 67 m		8 mm x 82 m		8 mm x 97 m	
SLEWING	Hydraulic motor driven. Worm gear speed reduction. Continuous 360° full circle slewing on ball bearing slew ring. Automatic slewing lock.					
Slewing speed	2.5 min ⁻¹ {rpm}					
OUTRIGGERS	Manually extended sliders and hydraulically extended jacks. Integral with crane frame.					
Extension width	Max. : 3.8 m Mid. : 3.0 m Min. : 2.20 m					
HYDRAULIC SYSTEM	Single gear pump					
Pump	Multiple control valves with integral safety valves					
Control valves	Multiple control valves with integral safety valves					
STANDARD SAFETY DEVICES	<ul style="list-style-type: none"> •Load meter •Load indicator •Over-winding alarm •Hook safety latch •Hydraulic safety valves, check valves and holding valves •Level gauge •Anti-two-block device* 					
SUITABLE TRUCKS	Gross vehicle mass 12,000 kg or more					

Model name with "H": Hook Stowing Device is equipped.

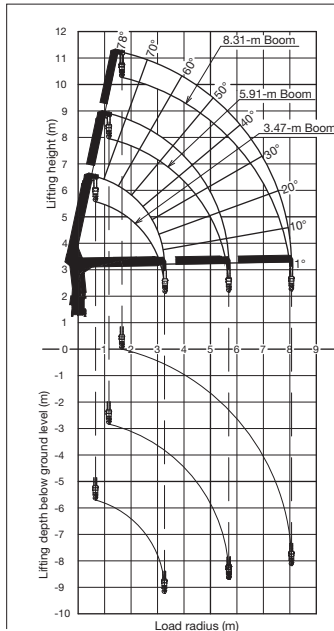
* For crane with hook stowing device only.

** Boom deflection, and subsequent radius and boom angle change must be accounted for when applying load to hook.

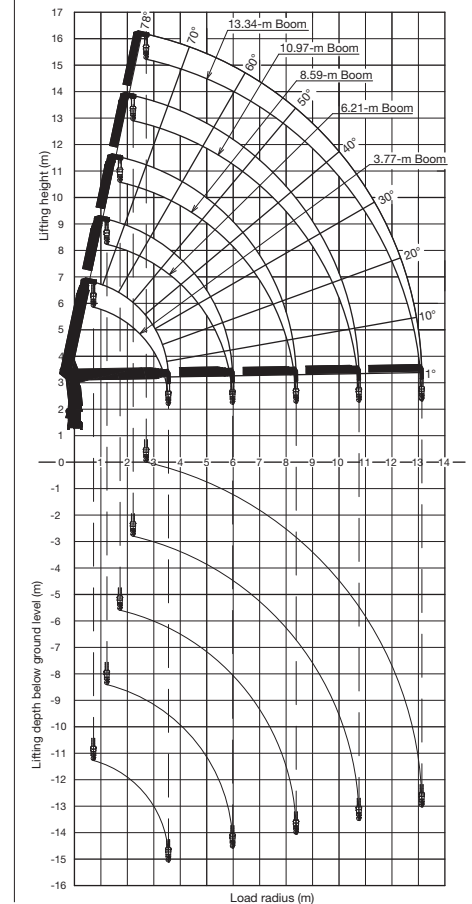
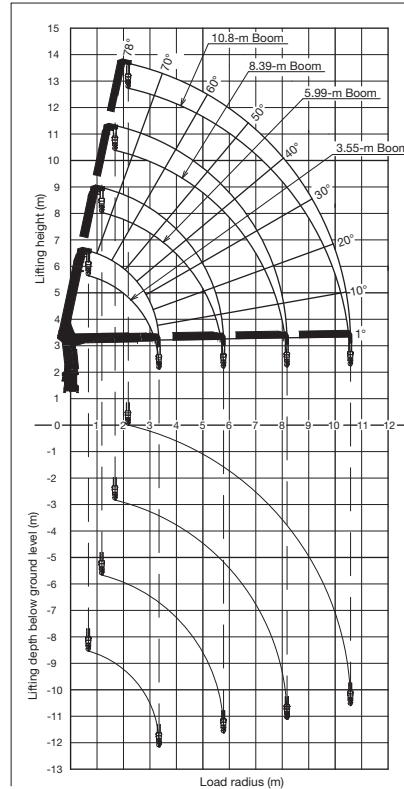
WORKING RANGE

TM-ZT505

TM-ZT503



TM-ZT504



NOTES FOR TECHNICAL SPECIFICATIONS:

Operating speeds of the crane are guaranteed under the conditions that the pump delivery is 60 L/min.

NOTES FOR WORKING RANGE:

Boom deflection, and subsequent radius and boom angle change must be accounted for when applying load to hook.

TM-ZT500 Series

RATED LIFTING CAPACITIES

Crane strength rated capacities

TM-ZT503, ZT503H

• 3.47-m boom

Load radius (m)	2.5 and below	2.95	3.25
Rated lifting capacity (kg)	5,050	4,050	3,700

• 5.91-m boom

Load radius (m)	2.95 and below	3.8	4.1	4.5	5.0	5.69
Rated lifting capacity (kg)	4,050	3,130	2,930	2,580	2,280	1,950

• 8.31-m boom

Load radius (m)	3.8 and below	4.1	4.5	5.0	5.5	6.0	6.5	7.0	7.5	8.09
Rated lifting capacity (kg)	3,130	2,930	2,580	2,280	2,030	1,830	1,680	1,550	1,430	1,280

TM-ZT504, ZT504H

• 3.55-m boom

Load radius (m)	2.5 and below	2.95	3.33
Rated lifting capacity (kg)	5,050	4,050	3,630

• 5.99-m boom

Load radius (m)	2.95 and below	3.8	4.1	4.5	5.0	5.77
Rated lifting capacity (kg)	4,050	3,130	2,930	2,580	2,280	1,900

• 8.39-m boom

Load radius (m)	3.8 and below	4.1	4.5	5.0	5.5	6.0	6.5	7.0	7.5	8.17
Rated lifting capacity (kg)	3,130	2,930	2,580	2,280	2,030	1,830	1,680	1,550	1,430	1,280

• 10.8-m boom

Load radius (m)	4.5 and below	5.0	6.0	7.0	8.0	9.0	10.0	10.58
Rated lifting capacity (kg)	2,030	1,830	1,480	1,230	1,080	980	880	830

TM-ZT505, ZT505H

• 3.77-m boom

Load radius (m)	2.5 and below	2.85	3.55
Rated lifting capacity (kg)	5,050	4,050	3,230

• 6.21-m boom

Load radius (m)	2.85 and below	3.6	3.9	4.5	5.0	5.5	5.99
Rated lifting capacity (kg)	4,050	3,180	2,930	2,430	2,130	1,880	1,650

• 8.59-m boom

Load radius (m)	3.6 and below	3.9	4.5	5.0	5.5	6.0	6.5	7.0	7.5	8.37
Rated lifting capacity (kg)	3,130	2,930	2,430	2,130	1,880	1,650	1,480	1,350	1,230	1,080

• 10.97-m boom

Load radius (m)	4.5 and below	5.0	6.0	7.0	8.0	9.0	10.0	10.75
Rated lifting capacity (kg)	2,030	1,830	1,480	1,230	1,030	880	780	730

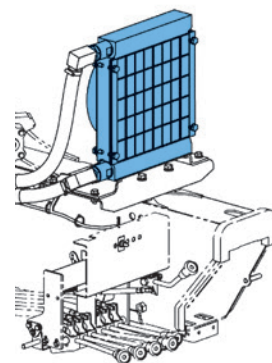
• 13.34-m boom

Load radius (m)	5.0 and below	6.0	7.0	8.0	9.0	10.0	11.0	12.0	13.12
Rated lifting capacity (kg)	1,330	1,100	950	830	730	650	600	550	500

NOTES FOR RATED LIFTING CAPACITIES :

The mass of hook (50 kg), slings and all similarly used load handling devices must be added to the mass of the load.

The above numerical values of total rated loads are based on crane strength only. The total rated loads based on stability may lower than those in the above table depending on the loading conditions and the types of the chassis.



Hydraulic Oil Cooler (OPTION)

Cools down hydraulic oil temperature for safe operation of hydraulic components and their longer service life. Saves costs of maintenance, repair, and part replacement. Possible causes of danger: if seals, hoses or cylinders are damaged, bursting hoses can cause injury to operators.



Note: Some specifications are subject to change



TADANO LTD. (International Sales Division)
4-12, Kamezawa 2-chome, Sumida-ku Tokyo 130-0014, Japan
Phone: +81-3-3621-7750 Fax: +81-3-3621-7785
<http://www.tadano.com/> E-mail: info@tadano.com

TADANO (THAILAND) CO., LTD. (Head Office/ Factory)
500/70 Moo 2, T.Tasit, A. Pluak Daeng, Rayong 21140
Phone: +66 (0) 33-01-0939 Fax: +66 (0) 33-01-0940
<http://www.tadanothailand.co.th/>
Email: tadanothailand.sales@tadano.com, tadanothailand.service@tadano.com